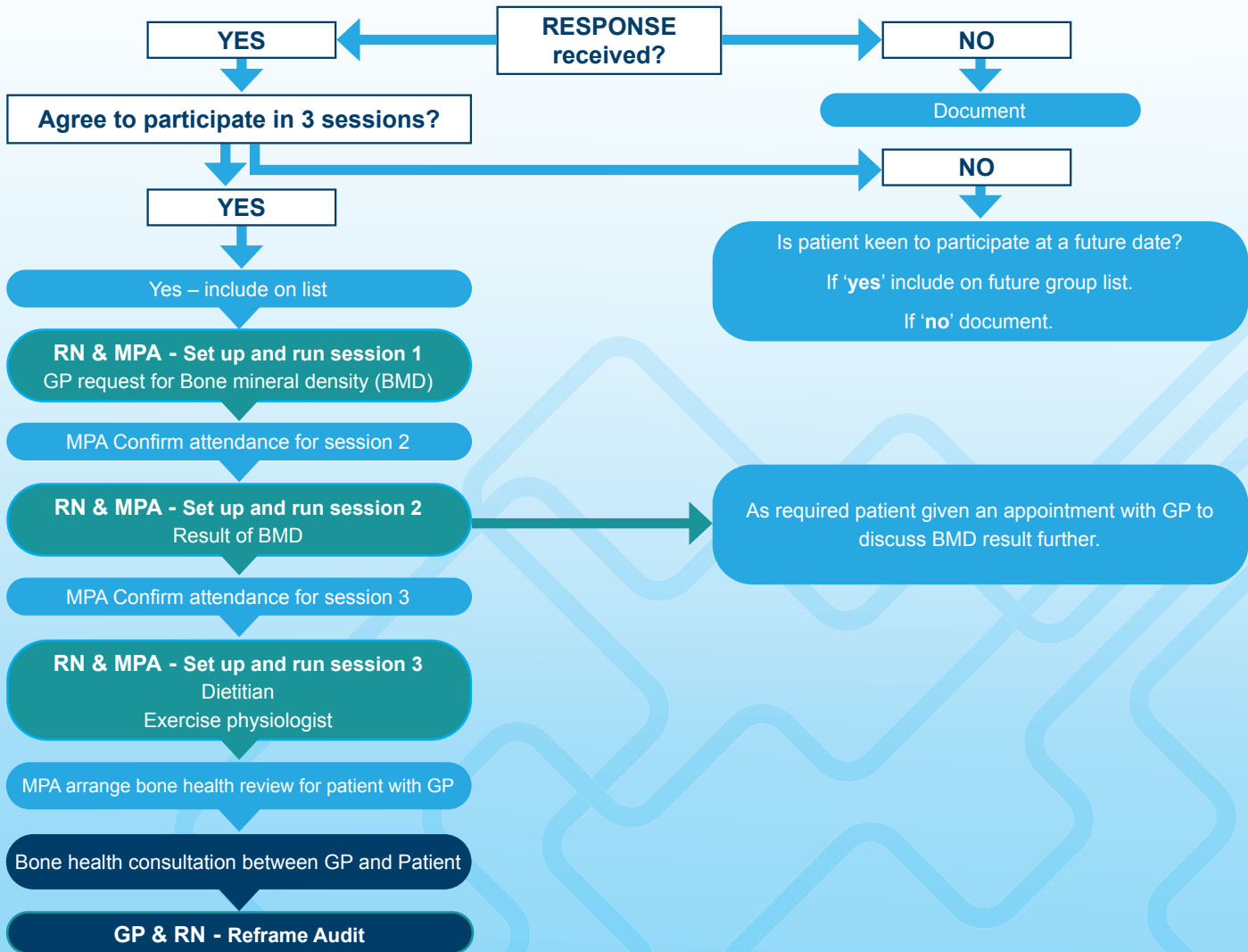




MODEL OF CARE

Bone Health Clinic

- Lead Practice Nurse
- GP
- Medical Practice Assistant (MPA)
- RN



MODEL OF CARE

Bone Health Clinic

LEAD PRACTICE NURSE

1. Facilitate planning meeting with practice manager and GP
2. Work with MPA to facilitate focus group meeting – meeting to include patients and allied health for planning input
3. Initial data clean up
4. Gather baseline data
5. Identify target population using search features of your Electronic Medical Records program.
6. Refine patient list
7. With MPA prepare invitation
8. Develop session plans
9. Facilitate sessions
10. Complete Reframe Audit

MEDICAL PRACTICE ASSISTANT TEAM

11. Participate in focus group meeting
12. Work with nurse to prepare invitation list
13. Send invitation list – SMS/email/phone
14. Manage response to invite – if patient happy to/or able to participate in all 3 sessions include on current group list. If not are they interested in being a part of another group? Or if not interested document.
15. Prepare documents and resources for sessions
16. Confirm patient attendance at sessions
17. Setup sessions
18. Work with practice nurse to facilitate session
19. MPAs documented the height, weight, BP and questioned participant about smoking status at the first session
20. Ensure evaluation surveys complete by patient/participant
21. Following session 2 arrange a bone mineral density appointment with patient's GP if necessary
22. Following session 3 arrange for all participants a bone health consultation with patient's regular GP

GENERAL PRACTITIONER

23. Participate in planning meeting
24. Participate in focus group meeting
25. Participate in first session of bone health clinic
26. Consult with participants as required to provide BMD result
27. Consult with patient following completion of three bone health sessions
28. Complete Reframe audit

PRACTICE MANAGER

29. Participate in planning meeting
30. Participate in focus group meeting

ALLIED HEALTH PROVIDERS

31. Participate in focus group
32. Provide advice, education and resources to group at session three